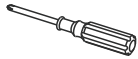


# BELLATERRA HOME

## Model: 203107-BRIDGE

### Tools List (Not included)



Screwdriver

### Parts List (Included)

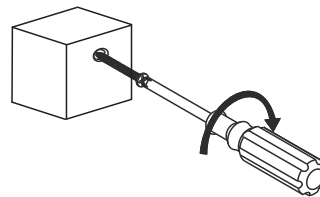
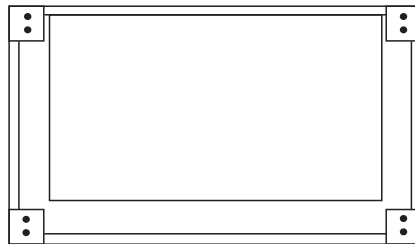


Screw  
(12pcs)



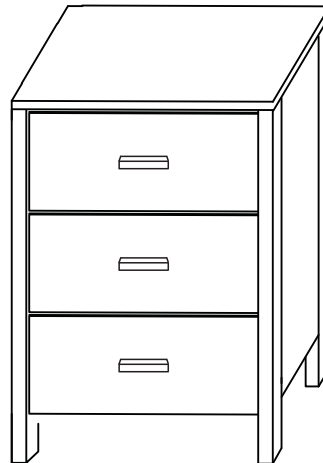
Metal Feet  
(4pcs)

Flip the vanity with the back side down on a soft surface. Align and fasten the 4 metal legs with screws to the pre-drilled holes on the bottom of the cabinet legs.



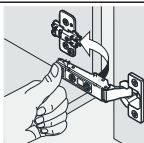
### Step 1

Put this bridge cabinet right next to the main cabinet, and check if it stays firm on the floor and good with the main cabinet.

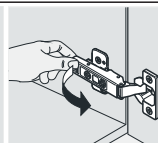


### Step 2

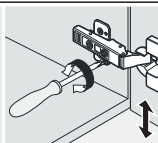
#### INSTALLATION TIPS:



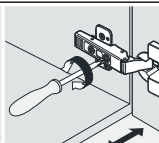
install



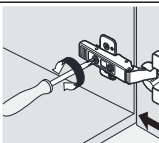
remove



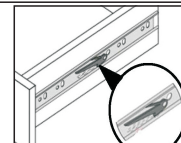
adjust the height



adjust the lateral



adjust the deep



press down the pin on this side & press up the one on another side to pull out the drawer box.

**NOTE: SINK STYLE, SHAPE, FAUCET HOLES, CUTOUT ON TOP, VANITY MAY VARY FROM THE PICTURE ABOVE. INSTRUCTIONAL PURPOSE ONLY.**

Professional installation is recommended.  
[www.bellaterra-home.com](http://www.bellaterra-home.com)

Bellaterra Home LLC, All Rights Reserved 2015